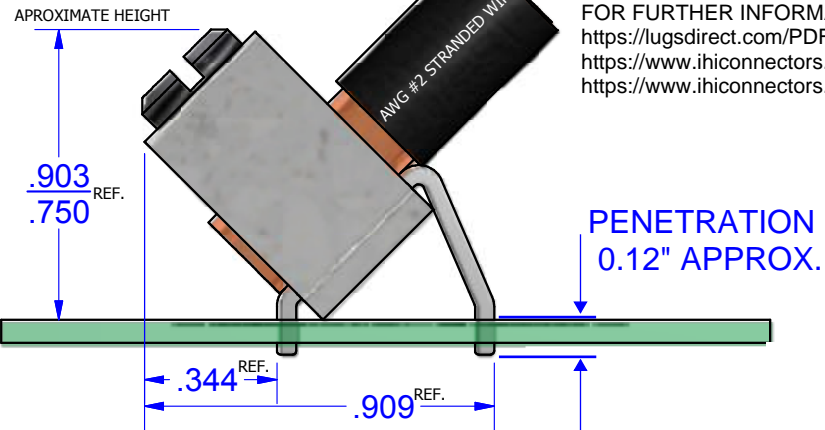


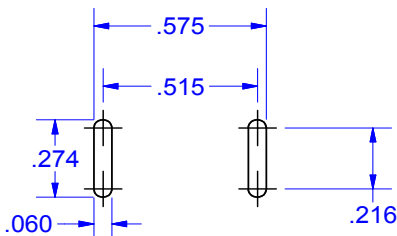
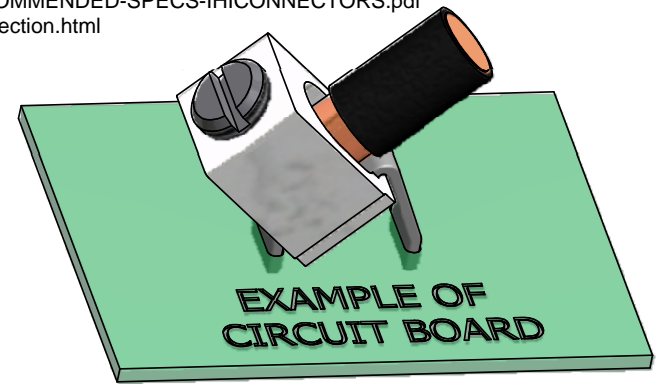
NOT FOR USE WHERE FAILURE CREATES A HAZARD TO HUMAN HEALTH OR SAFETY. ALL PRODUCTS ARE SUBJECT TO THIS FULL DISCLAIMER: <http://www.ihconnectors.com/disclaimer.html>

FOR FURTHER INFORMATION ON THE PROPER USE OF THIS PRODUCT IN SPECIFIC APPLICATIONS SEE <https://lugsdirect.com/PDF Documents/5-16-SLOTTEDSCREW-BIT-RECOMMENDED-SPECS-IHCONNECTORS.pdf>  
[https://www.ihconnectors.com/High\\_Amp\\_Wide\\_Trace\\_PCB\\_Wire\\_Connection.html](https://www.ihconnectors.com/High_Amp_Wide_Trace_PCB_Wire_Connection.html)  
<https://www.ihconnectors.com/Technical-Data-Installation.htm>



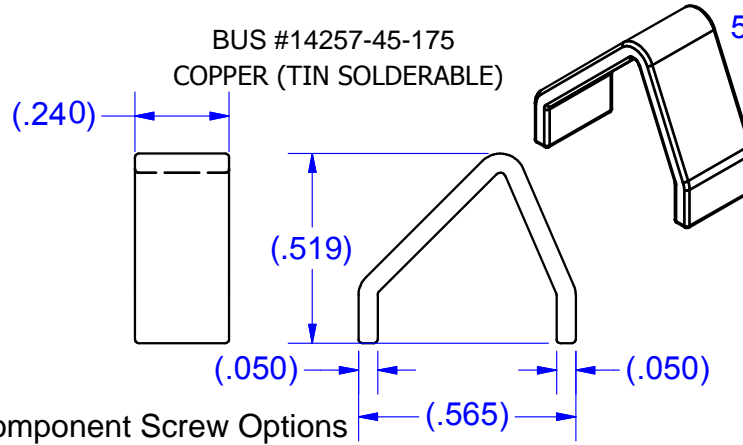
**PARTS MARKED**

- B2C
- IHI LOGO
- CSA LOGO
- UL REGOGNITION LOGO
- 2-14CU7
- 2-8AL7

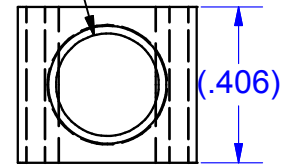


EXAMPLE OF CIRCUIT BOARD

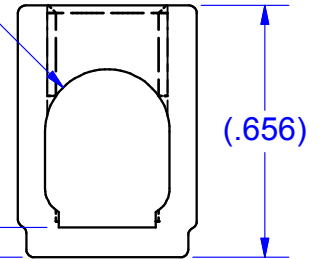
BUS #14257-45-175  
COPPER (TIN SOLDERABLE)



5/16-24 UNF - 2B



R.162

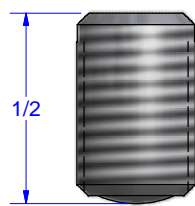
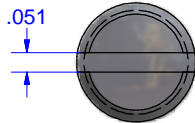


CONNECTOR #B2C  
ALUMINUM (TIN PLATED)

EXAMPLES OF TYPICAL SOLDER PADS

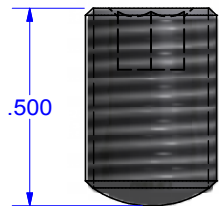
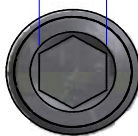


SCREW #12786SS  
STAINLESS STEEL  
INSERTED TO BOTTOM  
OF WIRE HOLE

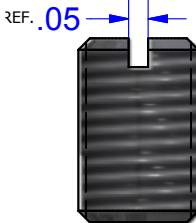


Screw #12786-HEX  
Steel (Zinc Plated)

4mm 5/32



SCREW #12786/15718/15720  
Steel (Zinc Plated)  
INSERTED TO BOTTOM  
OF WIRE HOLE



Schematic drawing covers:  
B2C-PCB-45-150  
B2C-PCB-45-150-HEX  
B2C-PCB-45-150-SS

THIS DRAWING AND DESIGN ARE THE PROPERTY OF INTERNATIONAL HYDRAULICS, INC., CLEVELAND, OHIO, AND MAY NOT BE DUPLICATED, USED FOR THE BASIS OF DESIGN OR MANUFACTURE WITHOUT THE WRITTEN PERMISSION OF INTERNATIONAL HYDRAULICS, INC., CLEVELAND, OHIO.

GENERAL TOLERANCES  
±.015 (±0.038)

MATERIAL: SEE ABOVE

FINISH:

INTERNATIONAL HYDRAULICS, INC.

TITLE:  
Connector + bus for PCB Mount  
45deg. ASSEMBLED CONNECTOR

SIZE: DRAWN BY: DWG NO.: REV:  
TDS "MULTI" SEE ABOVE 1

DATE: 11/7/11  
11/7/14

IHI CONNECTORS